

Use of Monodisperse and Activated PEGs to Accelerate Development of Antibody Drug Conjugates

Introduction

Delivery of a highly toxic drug payload directly to the site of a tumor while minimizing collateral damage to healthy tissue represented a major advancement in oncology when the first antibody-drug conjugate (ADC) was approved in the US in 2,000. Unfortunately, it has proven difficult to translate this innovative concept into wide-ranging clinical success; since the first approval, only five other ADCs have reached the market. With two of these approvals in 2017 and the latest one in 2019 and development challenges being addressed, this unique class of therapeutics is expected to gain momentum, living up to its promise as a breakthrough modality.

A key challenge in the development of ADCs is the impact of hydrophobic payloads on solubility and bioavailability. Issues with toxin solubility can lead to aggregation, drug load limitations and impact pharmacokinetics and pharmacodynamics (PK/PD).

This whitepaper describes the use of monodisperse polyethylene glycols (PEGs) to address the issue of low solubility. We explore how PEGs help to overcome hydrophobicity challenges presented by lipophilic, organic payloads, how they are currently

being used in ADCs and the critical quality attributes needed in a monodisperse PEG to address these challenges.

Impact of Toxin Solubility

An essential goal for an ADC is to increase the therapeutic window in contrast to treating with the toxin alone. It has been documented, that higher drug-to-antibody ratios (DAR) and higher lipophilicity can be cleared rapidly and can decrease the overall therapeutic window.

Several problems arise as a result from this toxin solubility including aggregation of the final ADC and corresponding issues with immunogenicity. While the easiest way to remove aggregates is through chromatographic purification, this requires adding processing steps, which can be very complex. As a result of this challenge, R&D is left with focusing on lower DAR analogues, which limits the ability to deliver more drug to the cancer cells.

- **Improved pharmacokinetics**
 - enhanced solubility
 - improved stability
- **Increased circulation time**
 - decreased amount of protein required for therapeutic efficacy
 - decreased dosing frequency due to optimized biodistribution
 - reduced renal clearance increases circulation time
- **Decreased toxicity**
 - improved safety profile
 - reduced immunogenicity
 - reduced antigenicity
 - reduced proteolysis
 - generally recognized as safe (GRAS status by FDA)

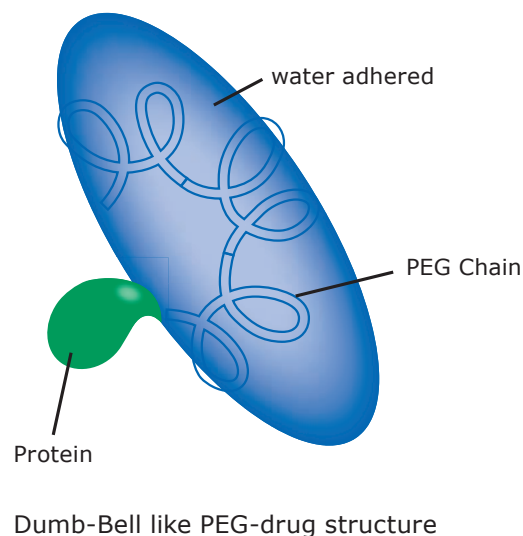
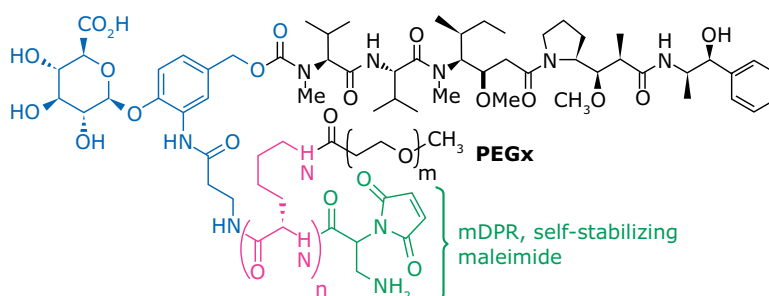


Figure 2. PEGs effectively shield the hydrophobic toxin from the microenvironment, leading to a number of important benefits.

Several publications have demonstrated how PEGs have been used in ADC development to overcome the challenges described above. A study by Burke, et al (Mol Cancer Ther (2017) 16:116) explored use of maleimide-PEG-Glucuronide-MMAE with variable PEG

lengths to identify the desired PEG size to stabilize a fully-conjugated ADC with a DAR of 8 (Figure 3). The drug load across the different species is the same; the difference is a branched appendage, close to the maleimide group.

PEG _x	m	n
PEG ₂₄	24	1
PEG ₁₂	12	1
PEG ₈	8	1
PEG ₄	4	1
PEG ₂	2	1
acetyl	0	1
No PEG	-	0



Burke et al., Mol Cancer Ther 16(1) 116

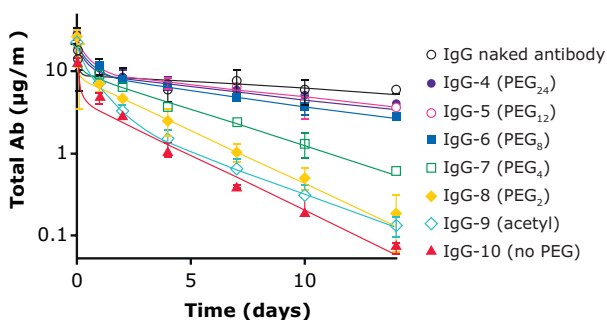
Maleimide-PEG-Glucuronide-MMAE with variable PEG lengths

Figure 3. Maleimide-PEG-Glucuronide-MMAE with variable PEG lengths of 2, 4, 8, 12 and 24.

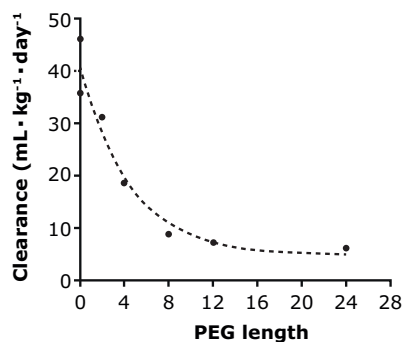
Impact of the PEG length on pharmacokinetics and plasma clearance for the DAR8 ADC is shown in Figure 4.

A ADC rat pharmacokinetics

3 mg/kg, iv dose, DAR 8 conjugates



B ADC Clearance as a function of PEG size



Burke et al.,
Mol Cancer
Ther 16(1) 116

Figure 4. Pharmacokinetics (A) and clearance (B) of the DAR8 ADC are a function of PEG length (2, 4, 6, 8, 12, and 24 PEG units).

Assessing plasma concentration based on radio labelling at 3 mg/kg, the authors showed a strong relationship between drug exposure and PEG length. The ADCs with the longer PEGs (8, 12 and 24) were able to stay in the plasma at the same concentration as the naked antibody (A). Figure 4B shows ADC clearance as a function of PEG length. With no or limited PEGs, clearance is quite high; in contrast, PEGs at 8, 12 and 24 has stabilized clearance – a very clear demonstration of the impact of PEGs.

Increasing PEG length showed a positive effect on

pharmacodynamics and increased tolerability and mouse survival rates (Figure 5). The same lengths of PEGs were evaluated for the same DAR8 ADC; dosing of the ADCs was at 14 days post-implant. With no PEG, there was rapid breakthrough of the tumor (A); efficacy was rescued as PEG length increased.

Single dose tolerability as measured by percentage weight change at a 50 mg/kg dose is shown in Figure 5B. At PEG lengths of 8, 12 and 24, weight remained relatively stable while at shorter PEG lengths or no PEG, there was a significant weight loss.

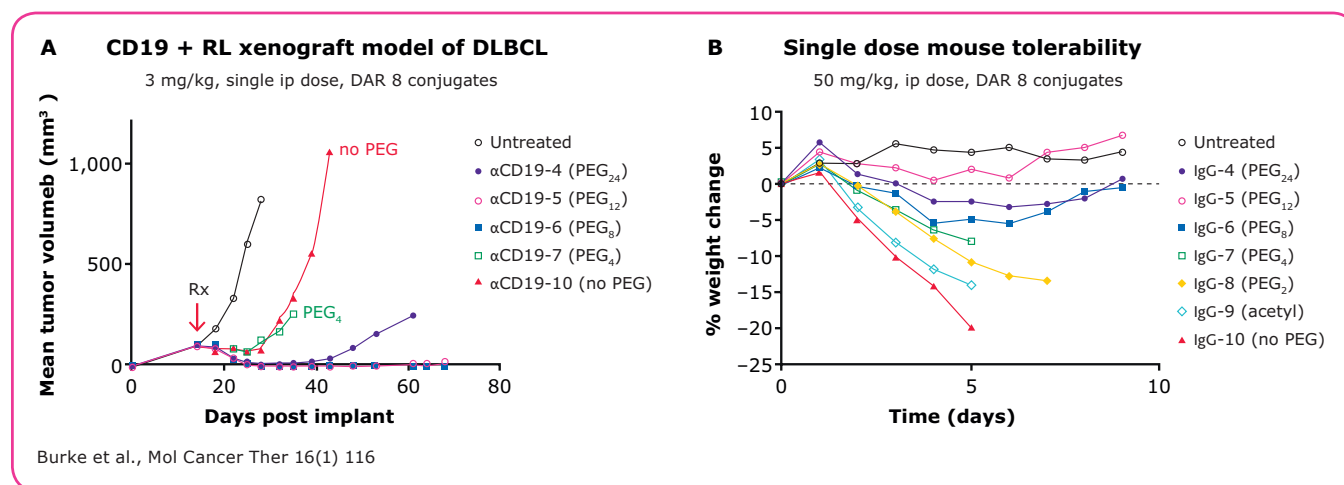


Figure 5. Increasing PEG length shows a positive effect on pharmacodynamics (A) and increase tolerability and mouse survival rates (B).

Drug Linkers and PEG Incorporation

A wide variety of drug linkers are available, and many have had PEG linkers incorporated to overcome different challenges. PEG linkers have been added to microtubule-targeting agents such as MMAF (Mol Cancer Ther. (2017) 16:116) and amberstatin (Mar. Drugs 2017 15:99) in order to improve and control solubility. DNA-targeting agents such as the highly-lipophilic pyrrolobenzodiazepine (Mol Cancer Ther

(2018) 17:2176) can be solubilized using PEG linkers. This approach allows for moderation of the PK/PD profile (Oncotarget (2015) 6:22496).

In addition to the use of a linear PEG chain as a spacer and solubilizing agent in the linker, branched PEGs are also being used in ADC constructs to enable higher DAR species (Figure 6).

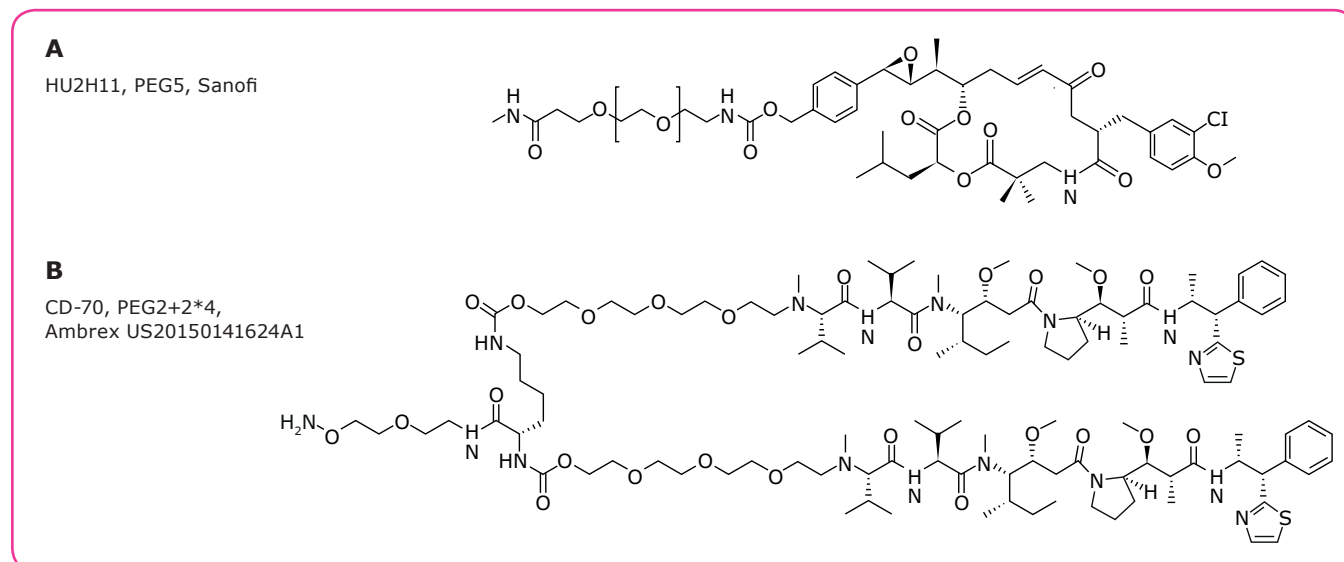


Figure 6. Examples of linear (A; Molecules (2017) 22:1281) and (B) branched PEGs.

Critical PEG Attributes and Analytical Approaches

In a classic synthesis of PEGs, polymerization of ethylene oxide connects randomly and with an equal probability to the built polyethylene chains. The result is a statistical distribution of the molecular rate as shown by MALDI-TOF, where each signal reflects one defined PEG link. The level of distribution depends on the process conditions during the polymerization. This polydisperse PEG, with multiple molecular rate fractions, would be not suitable for use as an ADC linker. This issue is solved with use of highly defined and pure monodisperse PEGs with a uniform molecular mass.

While the typical chain length of PEGs for linkers are 4 to 24 units, larger monodisperse PEGs can be manufactured. Figure 7 shows a PEG52 analyzed by MALDI-TOF with a clear separation of each PEG unit. Maleimide is used as a functional group targeting cysteine on the antibody; at the other end of the PEG, an azide group is used to connect to the payload. In addition to the impact on PK/PD, the uniform molecular rate of the PEG makes it much easier to be analytically characterized. This is beneficial for the registration of the ADC during all clinical phases and supports cGMP requirements which is crucial to commercialization.

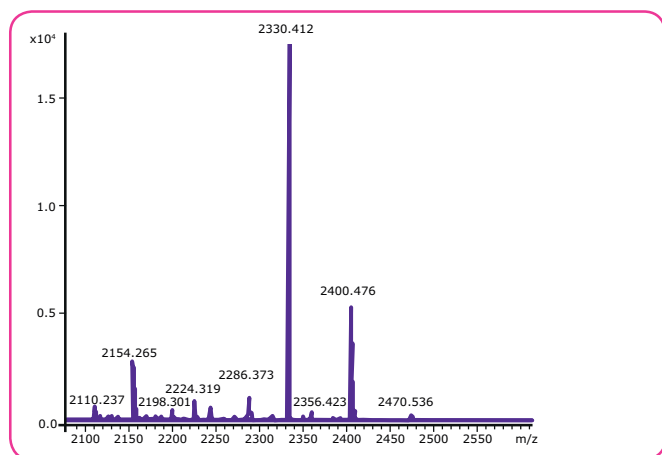


Figure 7. PEG52 analyzed by MALDI-TOF with a clear separation of each PEG unit.

The targeted purity of monodisperse PEGs is usually in the range of 90–95%, and this is the main quality parameter. Monodisperse PEGs don't differ to any extent from polydisperse PEGs in terms of sensitivity of oxidation to hydrolysis. To control this, a chemical derivatization is needed in front of every analytical run. PEGs can easily absorb elemental impurities such as heavy metals, salts, or polar compounds, which is analyzed by state-of-the-art methods via inductively coupled plasma mass spectrometry (ICP-MS), gas chromatography (GC), ion chromatography (IC), Karl Fischer methods or HPLC. Purity is, however, the main quality parameter of monodisperse PEGs.

Some challenges can arise in terms of PEG analytics. Separation of PEG units depends on the molecular rate as shown in Figure 8.

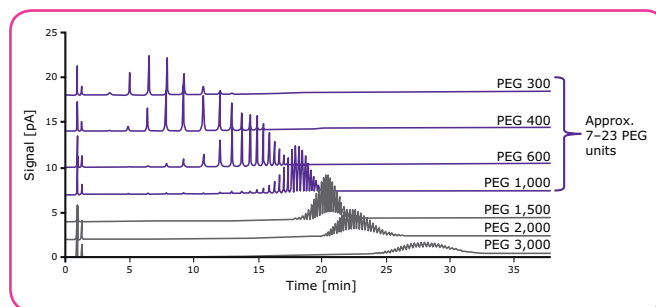


Figure 8. PEG52 analyzed by MALDI-TOF with a clear separation of each PEG unit.

Typical ADCs incorporate polymers of 4–24 PEG units. These various chain link compounds show a significant difference in peak separation, which has an impact on differentiation between purities and impurities of the monodisperse PEG. This must be considered, especially during the derivatization of the optimal PEG length and the respective analytical development.

In addition, the use of different detectors of HPLC systems for the determination of purity needs to be taken into consideration. With the absence of double bonds, the most preferred UV light detector cannot be used for PEGs, monodisperse and polydisperse. Applicable detectors are evaporative light scattering detectors (ELSD) and charged aerosol detectors (CAD). Nevertheless, ELSD tends to underestimate low-level signals while CAD overestimates them. With both detectors, small, semi-volatile compounds might be evaporated and therefore not visible or underestimated. Understanding the characteristics of the different detectors is thus crucial for correct interpretation of analytical results.

Figure 9 provides an example of an actual measurement of a monodisperse PEG using HPLC-ELSD. Purity is almost 99 percent and five impurities are detected, the largest with 1 percent area (ELSD).

In comparison, the same sample measured with a CAD shows a purity of only 89 percent (CAD). The increased number of impurities and the area percent is much higher than detected in the ELSD. Gas chromatography is also an option for small PEG units as they are sufficiently volatile up to approximately six ethylene glycol units.

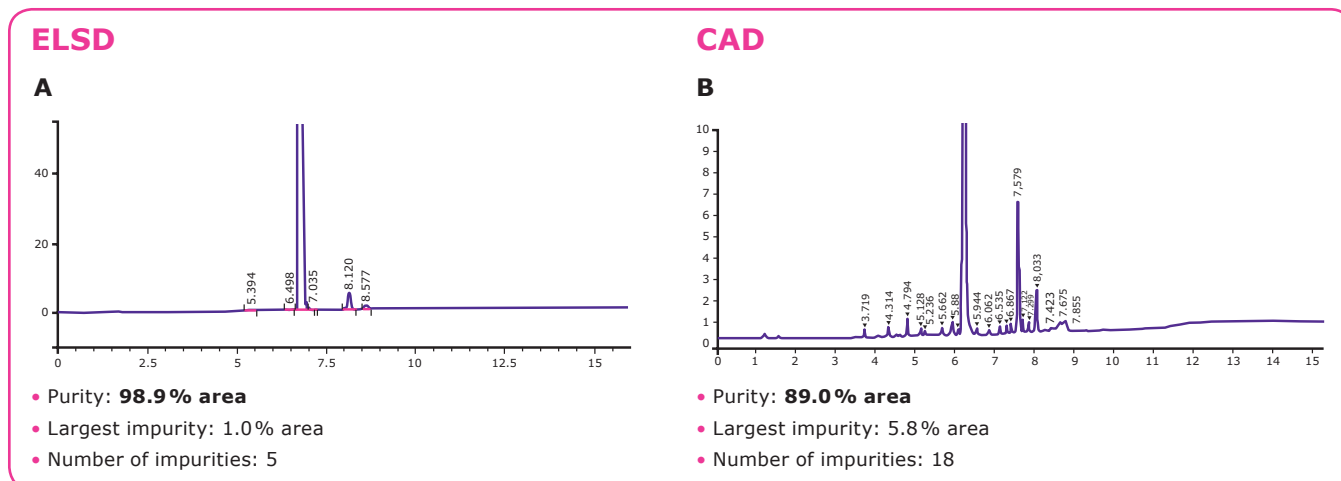


Figure 9. The same PEGs sample measured by (A) ELSD and (B) CAD. The difference in the two methods reinforce the need for expertise when analyzing results.

Conclusion

ADCs represent an important class of therapeutics with significant potential in oncology. With recent approvals and novel solutions to improve their development, we may be at an inflection point where we can now accelerate more of these innovative therapeutics through the clinic and onto the market.

The use of monodisperse PEGs can play a critical role in this new ADC design space in multiple ways. For development of high DAR species; the incorporation of a PEG linker backbone can enable delivery of a significantly higher dose to the target cells resulting

in better efficacy and the ability to reach a new cohort of targets. In addition, the use of PEGs can also be utilized to increase the bioavailability of any bioconjugate by modification of the solubility of the lipophilic payload. This approach can be both a rescue strategy for exiting constructs as well as a design feature for the development of new compounds. With all the advantages that monodisperse PEGs bring to the development of ADCs, PEGs as linkers look to be a critical factor in the ongoing success of this therapeutic modality.

The typical technical data above serve to generally characterize the excipient. These values are not meant as specifications and they do not have binding character. The product specification is available separately at [MerckMillipore.com](https://www.MerckMillipore.com).

For additional information, please visit [MerckMillipore.com](https://www.MerckMillipore.com).

To place an order or receive technical assistance, please visit [MerckMillipore.com/contactPS](https://www.MerckMillipore.com/contactPS).

We provide information and advice to our customers on application technologies and regulatory matters to the best of our knowledge and ability, but without obligation or liability. Existing laws and regulations are to be observed in all cases by our customers. This also applies in respect to any rights of third parties. Our information and advice do not relieve our customers of their own responsibility for checking the suitability of our products for the envisaged purpose.

